

# Canonical Analysis of Condensation in Factorised Steady States

M. R. Evans,<sup>1,\*</sup> Satya N. Majumdar,<sup>2</sup> and R. K. P. Zia<sup>3</sup>

*Received October 13, 2005; accepted February 15, 2006*  
*Published Online: April 11, 2006*

---

We study the phenomenon of real space condensation in the steady state of a class of mass transport models where the steady state factorises. The grand canonical ensemble may be used to derive the criterion for the occurrence of a condensation transition but does not shed light on the nature of the condensate. Here, within the canonical ensemble, we analyse the condensation transition and the structure of the condensate, determining the precise shape and the size of the condensate in the condensed phase. We find two distinct condensate regimes: one where the condensate is gaussian distributed and the particle number fluctuations scale normally as  $L^{1/2}$  where  $L$  is the system size, and a second regime where the particle number fluctuations become anomalously large and the condensate peak is non-gaussian. Our results are asymptotically exact and can also be interpreted within the framework of sums of random variables. We further analyse two additional cases: one where the condensation transition is somewhat different from the usual second order phase transition and one where there is no true condensation transition but instead a pseudocondensate appears at superextensive densities.

---

**KEY WORDS:** Stochastic processes, zero-range process, factorised steady states, Condensation transition.

**PACS numbers:** 05.40.-a, 02.50.Ey, 64.60.-i.

## 1. INTRODUCTION

Mass transport models encompass a large class of systems wherein ‘mass’, or some conserved quantity, is transferred stochastically from site to site of a lattice.

---

<sup>1</sup>SUPA, School of Physics, University of Edinburgh, Mayfield Road, Edinburgh EH9 3JZ, UK; e-mail: m.evans@ed.ac.uk

<sup>2</sup>Laboratoire de Physique Théorique et Modèles Statistiques, Université Paris-Sud, Bat 100, 91405, Orsay-Cedex, France; e-mail: majumdar@ipno.in2p3.fr

<sup>3</sup>Department of Physics and Center for Stochastic Processes in Science and Engineering, Virginia Tech, Blacksburg, VA 24061-0435, USA; e-mail: rkpzia@vt.edu

Well known examples of such models are the Zero-Range Process (ZRP),<sup>(10)</sup> and the Asymmetric Random Average Process (ARAP).<sup>(31)</sup> These are simple fundamental models which have been used to describe such diverse physical situations as traffic flow,<sup>(6)</sup> clustering of buses,<sup>(37)</sup> phase separation dynamics,<sup>(28)</sup> force propagation through granular media,<sup>(7)</sup> shaken granular gases<sup>(43,44)</sup> and sandpile dynamics.<sup>(25)</sup> For a recent review of the ZRP and related models and applications see Ref. (13).

Condensation is manifested in such models when, in the steady state, a finite fraction of the total mass condenses onto a single lattice site. At low global mass densities the system is in the fluid phase where the mass is distributed evenly over all sites. Here, the single site mass distribution  $p(m)$  typically decays exponentially with  $m$  implying a finite amount of mass at each site with the mean being the global mass density  $\rho$ . On increasing the global density above a critical value,  $\rho_c$ , an extra piece of  $p(m)$  emerges which represents the condensate i.e. a single site which contains the global excess mass  $(\rho - \rho_c)L$  where  $L$  is the system size. Thus in the condensed phase the condensate coexists with the background fluid. Note that the condensation occurs in real space and, in principle, in any number of dimensions. In this paper we will analyse in detail the structure of the condensate, elucidating when it occurs, its shape and its fluctuations. A short communication of some of our results has been given in Ref. (34).

In general mass transfer models form examples of systems exhibiting non-trivial nonequilibrium steady states. Since the models are defined by stochastic dynamical rules, their steady state distributions are not a priori known. However it turns out that a large class of models, which we shall discuss below, enjoy the convenient property of having a factorised steady state. This means that the steady state probability  $P(\{m_l\})$  of finding the system with mass  $m_1$  at site 1, mass  $m_2$  at site 2 etc is given by a product of (scalar) factors  $f(m_l)$ —one factor for each site of the system—i.e.

$$P(\{m_l\}) = Z(M, L)^{-1} \prod_{l=1}^L f(m_l) \delta\left(\sum_{l=1}^L m_l - M\right). \quad (1)$$

where  $Z(M, L)$  is a normalisation which ensures that the integral of the probability distribution over all configurations containing total mass  $M$  is unity, hence

$$Z(M, L) = \prod_{l=1}^L \left[ \int_0^\infty dm_l f(m_l) \right] \delta\left(\sum_{l=1}^L m_l - M\right). \quad (2)$$

Here, the  $\delta$ -function has been introduced to guarantee that we only include those configurations containing mass  $M$  in the integral. The single-site weights,  $f(m)$  are determined by the details of the mass transfer rules.

Thus when the steady factorises, the analysis of condensation reduces to the evaluation of (2), a problem first addressed in Ref. (3). Equation (2) defines a canonical partition function in that the delta function imposes the constraint of fixed total mass  $M$ . As we shall discuss in detail below analysis of (2) has only been carried out in the fluid phase and effectively in the grand canonical ensemble where the total mass is allowed to fluctuate. Our aim here is to present a full analysis of (1, 2) in the canonical ensemble. In particular we shall elucidate the mechanism of condensation within factorised steady state.

Although our focus in this paper is on the analysis of the steady state (1, 2), it is relevant to briefly review some particular models and dynamics which give rise to such steady states, and previous studies of condensation phenomenon. First we mention the backgammon model<sup>(20,40)</sup> where unit masses hop under dynamics respecting detailed balance with respect to an energy function which is simply minus the number of unoccupied sites in the system. When the temperature  $T \rightarrow 0$  a condensate, where all masses are on the same site, dominates the steady state. Since the model and dynamics are constructed so that an energy functions exists, the steady state automatically factorises into the form (1, 2) (but with discrete mass variables). The motivation for the Backgammon Model was actually to study a simple model for glassy dynamics since in the late time regime at low  $T$  entropic barriers and slow dynamics arise.

In Ref. (3) the factorised steady state of the Backgammon model was generalised to the form (1, 2) with single-site weights  $f(m)$  that could have an asymptotic power law dependence

$$f(m) \sim m^{-\gamma}. \tag{3}$$

It was shown that a condensation transition would occur if  $\gamma > 2$ . Mean-field dynamics for this general factorised steady state were constructed from the detailed balance condition and the mean-field dynamics of condensation was studied in Ref. (9). Here ‘mean field’ is used in the sense that a particle can hop from a given site to any other.

On the other hand it has long been known that the ZRP, a stochastic model defined by *local* stochastic dynamics and without respect to any energy function, has a factorised steady state.<sup>(10,42)</sup> In a heterogeneous system, where the rules for mass transfer depend on the site, the condensation may occur at the site with lowest outgoing mass transfer rate.<sup>(11,32)</sup> In this case the mechanism for condensation (in real space) is exactly analogous to Bose-Einstein condensation in momentum space in an ideal Bose gas and the slowest site plays the role of the ground state in the quantum system.

For homogeneous dynamical rules for the transfer of mass, which we will focus on in this work, the condensation mechanism in the ZRP was first studied, to our knowledge, in Ref. (37) where the ZRP was used as an approximate description of a model of bus routes. It was shown that if the hop rate  $u(m)$  for a mass to move

from a site with  $m$  masses to its neighbouring site decays as  $u(m) \sim \beta(1 + \gamma/m)$  then the single-site weight decays as (3) so that a condensation transition occurs if  $\gamma > 2$ . Condensation in the ZRP has been further studied in Refs. (1, 19, 24, 26).

Another model with a factorised steady state is the ARAP.<sup>(31)</sup> Although usually this model does not exhibit condensation, condensation may be induced by imposing a maximum threshold on the amount of mass that may be transferred between sites.<sup>(46)</sup>

It turns out that the ZRP and ARAP may be unified by considering a very general class of one-dimensional mass transport models:<sup>(16)</sup> A mass  $m_i$  resides at each site  $i$ ; at each time step, a portion,  $\tilde{m}_i \leq m_i$ , chosen from a distribution  $\phi(\tilde{m}|m)$ , is chipped off to site  $i + 1$ . Choosing the chipping kernel  $\phi(\tilde{m}|m)$  appropriately recovers the ZRP, the ARAP and the chipping model of Ref. (35). Moreover the class of models encompasses both discrete and continuous time dynamics and discrete and continuous mass. A necessary and sufficient condition for a factorised steady state is that the chipping kernel is of the form<sup>(16)</sup>

$$\phi(\tilde{m}|m) \propto u(\tilde{m})v(m - \tilde{m}) \quad (4)$$

where  $u(z)$  and  $v(z)$  are arbitrary non-negative functions. Then the single site weight is given by

$$f(m) = \int_0^m d\tilde{m} u(\tilde{m})v(m - \tilde{m}) \quad (5)$$

This result may be generalised to arbitrary lattices in all dimensions.<sup>(17,23)</sup> Given a chipping kernel  $\phi(\tilde{m}|m)$ , sometimes it is hard to verify explicitly that it is of the form (5) and thereby to identify the functions  $u(m)$  and  $v(m)$  in order to construct the weight  $f(m)$ . This problem was circumvented by devising a test<sup>(45)</sup> to check if a given explicit  $\phi(\tilde{m}|m)$  satisfies the condition (5) or not. Further, if it “passes this test,” the weight  $f(m)$  can be found explicitly by a simple quadrature.<sup>(45)</sup> Finally, for any desired function  $f(m)$ , one can construct dynamical rules (i.e.,  $\phi$ s) that will yield  $f(m)$  in a factorised steady state.

Condensation has also been noted and studied in mass transport models without factorised steady states. In the chipping model defined in<sup>(35)</sup> all the mass at a site can move to a neighbouring site. Condensation in the model was studied in a mean-field approximation for the steady state which amounts to approximating the true (unknown) steady state by the factorised form (1, 2). It turned out that in the true steady state condensation is actually only observed in the case of symmetric hopping.<sup>(35,38,39)</sup> However a generalisation which includes both the chipping model and ZRP as special cases does appear to exhibit condensation for asymmetric hopping.<sup>(33)</sup> Finally we mention more complicated condensation scenarios such as the two species ZRP<sup>(14)</sup> where, for example, one species may induce condensation in the other.

So far we have reviewed models exhibiting condensation which comprise hopping particles. Condensation phenomena have also been observed in the context of the rewiring dynamics of networks with a fixed number of nodes and links.<sup>(5,8)</sup> There the condensate corresponds to a node which is ‘hub’ which captures a finite fraction of the links. Also, models of macroeconomies may exhibit ‘wealth condensation’ where the wealth is the conserved quantity and condensation corresponds to a single individual capturing a finite fraction of the wealth.<sup>(4)</sup> A further important application of the condensation mechanism is to determine a criterion for phase separation in one-dimensional systems.<sup>(28,15)</sup> Phase separation, or indeed the lack of it, has been reported in a number of one-dimensional and “quasi-1-D” systems typically involving three species of charged particles with an exclusion interaction.<sup>(2,18,27,29,30,36,40)</sup> By mapping the domains between the neutral particles onto the sites of a ZRP, the ZRP can be used as an effective description of domain dynamics and the criterion for condensation in this effective description determines when phase separation will or will not occur.

The paper is structured as follows. In Section 2 we review the grand canonical approach which correctly predicts the critical density, but does not shed light on the nature of the condensate. Before embarking on the canonical analysis we interpret in Section 3 the canonical partition function in the framework of sums of random variables and deduce rather quickly some key properties of the condensate. In Section 4 we summarise the results of the full canonical analysis which are detailed in Sections 5 and 6: in Section 5 we present an exactly solvable case where a closed expression can be found for the canonical partition function and in Section 6 the asymptotic analysis of the canonical partition function in the general case is presented. In Section 7 we consider other forms of  $f(m)$  such as (3) with  $\gamma < 2$  for which condensation does not occur, and stretched exponential  $f(m)$  for which condensation does occur but with some differences. We conclude with a discussion in Section 8.

## 2. CRITERION FOR CONDENSATION: GRAND CANONICAL APPROACH

Assuming that the steady state of mass transport model is of the factorised form (1, 2), one next turns to the issue of condensation within this factorised steady state. In particular, we ask: (i) when does a condensation transition occur, i.e., the criterion for condensation (ii) if condensation occurs, what is the precise nature of the condensate? The factorization property allows (i) to be addressed rather easily within a grand canonical ensemble (GCE) framework—an approach similar to the one used in traditional Bose-Einstein condensation in an ideal gas of bosons, though there are some important differences in the present case. In this approach one takes the thermodynamic limit ( $L, M \rightarrow \infty$  with fixed *overall* density  $\rho = M/L$ ). Then (1) becomes a product measure state where the sites are

decoupled from each other and the single site mass distribution is simply given by  $p(m) = f(m)e^{-\mu m}$  where  $\mu$  is the negative of the chemical potential and is chosen to fix the density, giving rise to the relation

$$\rho = \rho(\mu) \equiv \frac{\int_0^\infty m f(m) e^{-\mu m} dm}{\int_0^\infty f(m) e^{-\mu m} dm}. \quad (6)$$

The criterion for condensation can be derived easily by analysing the function  $\rho(\mu)$  defined in Eq. (6). Note that  $f(m)$  is only defined modulo any pure exponential factor  $e^{-cm}$  since  $c$  may be absorbed into  $\mu$ .

The behavior of  $\rho(\mu)$  depends on  $f(m)$ . We consider three cases separately.

1. First consider the case when  $f(m)$  decays faster than exponential for large  $m$ . In this case,  $\mu$  is allowed to take any value in  $[-\infty, \infty]$  and  $\rho(\mu)$  is monotonic in  $\mu$ , ranging from  $\infty$  to 0. Thus, for a given  $\rho$ , one can always find a suitable  $\mu$  to satisfy Eq. (6) and there is no condensation.
2. We next consider the case when  $f(m)$  decays slower than  $m^{-2}$  for large  $m$ . In this case, the allowed range of  $\mu$  is  $[0, \infty]$ , in order that the integrals in (6) converge. The function  $\rho(\mu)$  diverges as  $\mu \rightarrow 0$ , and then decreases monotonically to  $\rho(\mu) \rightarrow 0$  as  $\mu \rightarrow \infty$ . Once again, for any given  $\rho$ , there is always a solution of  $\mu$  from Eq. (6) and there is no condensation.
3. Finally consider the case when  $f(m)$  decays (a) slower than exponential but (b) faster than  $m^{-2}$ . In this case, the allowed range of  $\mu$  is  $[0, \infty]$  over which  $\rho(\mu)$  is a monotonically decreasing function of  $\mu$ . However, the crucial difference here from the two previous cases is that  $\rho(0)$  is finite. Indeed,  $\rho(0)$  sets the critical density  $\rho_c = \rho(0)$ . When the given  $\rho < \rho_c$ , a positive  $\mu$  satisfying (6) exists. However, when  $\rho > \rho_c$ , there is no real solution to (6), signalling a condensation transition. In this phase, the extra mass  $(\rho - \rho_c)L$  forms a condensate.

A natural choice of  $f(m)$  satisfying the criterion of condensation in (3). above is

$$f(m) \simeq A m^{-\gamma} \quad \text{with } \gamma > 2. \quad (7)$$

For the majority of this paper, we stay with the choice of  $f(m)$  in (7) and set, without loss of generality,  $\int_0^\infty f(m) dm = 1$ . For brevity, we also assume that  $\gamma$  is non-integer although our analysis can be easily extended to the integer case. In Section 7 some other forms for  $f(m)$  will be explored.

The single-site probability distribution  $p(m)$  is given by

$$p(m) = f(m) e^{-\mu m} \quad \text{for } \rho < \rho_c. \quad (8)$$

which exhibits a characteristic mass  $m^* = 1/\mu$ . As the critical density is approached  $\mu$  decreases to zero and the characteristic mass diverges giving rise to

a power law  $p(m) \simeq f(m)$  at the critical density. For  $\rho > \rho_c$  the grand canonical approach cannot be used to determine  $p(m)$ .

This last point is in contrast to usual Bose-Einstein condensation where one can work in the GCE even in the condensed phase. This is done by letting  $\mu$  tend to zero as  $1/V$  where  $V$  is the volume of the system i.e. any density of bosons can be achieved by carefully letting  $\mu \searrow 0$  in a way dependent on system size. However, in the present case letting  $\mu \rightarrow 0$  in (6) always results in a fixed critical density  $\rho_c$ .

### 3. INTERPRETATION AS SUMS OF RANDOM VARIABLES

Before proceeding with a detailed analysis of the canonical partition function (2) it is instructive to discuss the problem from the perspective of sums of random variables.

First note that if  $f(m)$  is normalised then  $\prod_{i=1}^L f(m_i)$  is the probability that  $L$  independent and identically distributed (iid) positive random variables, each drawn from a distribution  $f(m)$ , take the values  $m_1, m_2, \dots, m_L$  which we denote by  $\underline{m}$ . Moreover, the partition function  $Z(M, L)$  in (2) is precisely the probability that the sum of the random variables is equal to  $M$ . Equivalently one can think of an ensemble the configurations of which are defined as masses  $\underline{m}$  whose sum is  $M$ , with the weights of the configurations being  $\prod_{i=1}^L f(m_i)$ . The question of condensation then reduces to the study of the statistical properties of the largest of the  $L$  random variables.

Let us define the moments of  $f(m)$  as

$$\mu_k = \int_0^\infty dm m^k f(m). \tag{9}$$

If the mean  $\mu_1$  exists (e.g., (7)) and is such that  $L\mu_1 > M$ , we expect the ensemble to be dominated by configurations where  $m_i = \mathcal{O}(1) \forall i$ . However, if  $L\mu_1 < M$  then we expect the ensemble to be dominated by configurations where  $L - 1$  random variables are  $\mathcal{O}(1)$  and one is  $\mathcal{O}(M)$ . Thus, for  $f(m) \sim m^{-\gamma}$  and  $\gamma > 2$  we expect condensation at a critical density  $\rho_c = \mu_1$ . This recovers the results given in Section 2.

We can also obtain the asymptotic behaviour of the partition function (2) by noting that the large random variable could be any of the  $L$  possible ones and that its probability  $\sim A(M - M_c)^{-\gamma}$ . Therefore we expect in the condensed phase

$$Z(M, L) \sim AL/(M - M_c)^\gamma. \tag{10}$$

It turns out that this simple argument gives the correct asymptotic behavior to be derived in Section 6 (see Eqs. (86), (103)).

Let us now consider the fluctuations of the condensate in the case  $\gamma > 2$ . Since we have the constraint of total mass  $M$  we can equally well consider the

fluctuations of the total fluid mass which is essentially the sum of  $L - 1$  random variables drawn from  $f(m)$ :

$$M_f = \sum_{i=1}^{L-1} m_i. \quad (11)$$

Now if  $\gamma > 3$ , then  $\mu_2$  is finite and

$$\Delta \equiv \sqrt{\mu_2 - \mu_1^2} \quad (12)$$

is the well defined width of  $f(m)$ . The standard result of the Central Limit Theorem applies to this fluid component, with

$$\Delta M_f \equiv [\langle M_f^2 \rangle - \langle M_f \rangle^2]^{1/2} \quad (13)$$

$$\simeq [(\mu_2 - \mu_1^2)L]^{1/2} \quad \text{for } \gamma > 3 \quad (14)$$

By constraint, the fluctuation of the condensate will be controlled by  $\Delta\sqrt{L}$ .

However if  $2 < \gamma \leq 3$ , then  $\mu_2$  does not exist. Instead,  $\Delta M_f \simeq \sum_i m_i^2$  will be dominated by the largest of the  $L - 1$  random variables in the fluid. Therefore

$$\Delta M_f = \mathcal{O}(L^{\frac{1}{\gamma-1}}) \quad \text{for } 2 < \gamma \leq 3. \quad (15)$$

In this case the fluctuations of the condensate are large  $\Delta M_f \gg O(L^{1/2})$  and we refer to this as an anomalous condensate.

In fact, using the sums of random variables interpretation we obtain very quickly the scaling behaviour of our main results. In the following sections we will obtain more precise and detailed results.

#### 4. NATURE OF THE CONDENSATE: SUMMARY OF RESULTS

The GCE analysis of Section 2 correctly predicts the criterion for condensation and even the critical density  $\rho_c = \int_0^\infty m f(m) dm$  (whenever condensation occurs), but provides little insight into the condensed phase itself where  $\rho > \rho_c$ . In this section we explore the condensed phase in detail by staying within the framework of a ‘canonical ensemble’ and analyzing the single site mass distribution

$$p(m) \equiv \int dm_2 \dots dm_L P(m, m_2, \dots, m_L) \delta \left( \sum_{j=2}^L m_j + m - M \right), \quad (16)$$

in a finite system of size  $L$  and total mass  $M = \rho L$ . Note that  $p(m)$  depends on  $L$ , though we have suppressed its  $L$  dependence just for notational simplicity. Using



Eqs. (1) and (2), we have

$$p(m) = f(m) \frac{Z(M - m, L - 1)}{Z(M, L)}. \tag{17}$$

The rest of this section is devoted to the analysis of  $p(m)$  in (17) with  $f(m)$  given by (7). We have thus two parameters  $\gamma$  and  $\rho$ . Our goal is to show how the condensation manifests itself in different behaviors of  $p(m)$  in different regions of the  $(\rho - \gamma)$  plane. We will show that for  $\gamma > 2$ , there is a critical curve  $\rho_c(\gamma)$  in the  $(\rho - \gamma)$  plane that separates a fluid phase (for  $\rho < \rho_c(\gamma)$ ) from a condensed phase (for  $\rho > \rho_c(\gamma)$ ). In the fluid phase the mass distribution decays exponentially for large  $m$ ,  $p(m) \sim \exp[-m/m^*]$  where the characteristic mass  $m^*$  increases with increasing density and diverges as the density approaches its critical value  $\rho_c$  from below. At  $\rho = \rho_c$  the distribution decays as a power law,  $p(m) \sim m^{-\gamma}$  for large  $m$ . For  $\rho > \rho_c$ , the distribution, in addition to the power law decaying part, develops an additional bump, representing the condensate, centred around the “excess” mass:

$$M_{\text{ex}} \equiv M - \rho_c L. \tag{18}$$

Furthermore, by our analysis within the canonical ensemble, we show that even inside the condensed phase ( $\rho > \rho_c(\gamma)$ ), there are two types of behaviors of the condensate depending on the value of  $\gamma$ . For  $2 < \gamma < 3$ , the condensate is characterized by anomalous non-gaussian fluctuations whereas for  $\gamma > 3$ , the condensate has gaussian fluctuations. This leads to a rich phase diagram in the  $(\rho - \gamma)$  plane, a schematic picture of which is presented in Fig. 1.

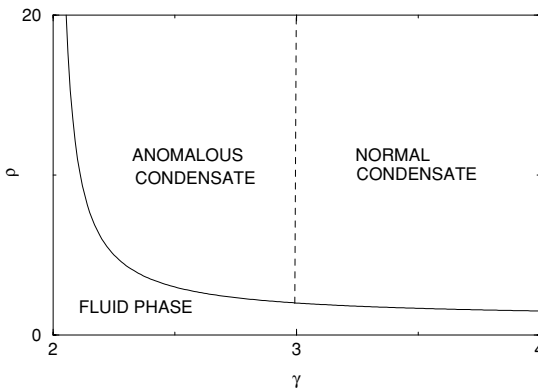


Fig. 1. Schematic phase diagram in the  $\rho$ - $\gamma$  plane.

To proceed, we take the Laplace transform of (2):

$$\int_0^\infty Z(M, L) e^{-sM} dM = [g(s)]^L, \quad (19)$$

where

$$g(s) = \int_0^\infty f(m) e^{-sm} dm. \quad (20)$$

The main challenge is to invert (19) for a given  $f(m)$  to compute  $Z(M, L)$  then exploit its behavior via (17) to analyse the single site mass distribution  $p(m)$ . It turns out that in certain cases, to be discussed in Section 5, one can invert (19) exactly. However, for general  $f(m)$  we rely on an asymptotic analysis to be presented in Section 6. Before presenting the details of these calculations we give a summary of our main results for  $p(m)$ .

## 4.1. Summary of Results

### 4.1.1. Fluid phase $\rho < \rho_c$

In this case one finds (see 68, 69)

$$p(m) \sim f(m) e^{-m/m^*} \quad \text{for } 1 \ll m \ll M \quad (21)$$

where the characteristic mass  $m^*$  diverges  $\rho$  approaches  $\rho_c$  from below as  $(\rho - \rho_c)^{-1}$  for  $\gamma > 3$  and  $(\rho - \rho_c)^{-1/(\gamma-2)}$  for  $2 < \gamma < 3$ .

### 4.1.2. Condensed Phase $\rho > \rho_c$

In this case one finds

$$p(m) \simeq f(m) \quad \text{for } 1 \ll m \ll O(L) \quad (22)$$

$$p(m) \simeq f(m) \frac{1}{(1-x)^\gamma} \quad \text{for } m = xM_{\text{ex}} \quad \text{where } 0 < x < 1 \quad (23)$$

$$p(m) \sim p_{\text{cond}}(m) \quad \text{for } m \sim M_{\text{ex}} \quad (24)$$

Here  $p_{\text{cond}}$  is the piece of  $p(m)$  which describes the condensate: Centred on the excess  $M_{\text{ex}}$  and with integral being equal to  $1/L$ , it takes on two distinct forms (see 90, 105) according to whether  $\gamma < 3$  or  $\gamma > 3$ . For  $2 < \gamma < 3$

$$p_{\text{cond}}(m) \simeq L^{-\gamma/(\gamma-1)} V_\gamma \left[ \frac{m - M_{\text{ex}}}{L^{1/\gamma-1}} \right], \quad (25)$$

where  $V_\gamma(z)$  is given exactly by Eq. (77) with asymptotic forms in Eqs. (78–80). Thus the shape of the condensate bump is non-gaussian for  $2 < \gamma < 3$  and we

refer to this as an ‘anomalous’ condensate. On the other hand, for  $\gamma > 3$

$$p_{\text{cond}}(m) \simeq \frac{1}{\sqrt{2\pi \Delta^2 L^3}} e^{-(m-M_{\text{ex}})^2/2\Delta^2 L} \quad \text{for } |m - M_{\text{ex}}| \ll O(L^{2/3}). \quad (26)$$

i.e.  $p_{\text{cond}}(m)$  is gaussian on the scale  $|m - M_{\text{ex}}| \ll O(L^{2/3})$ , but, far to the left of the peak,  $p(m)$  decays as a power law (see 106).

#### 4.1.3. Critical density $\rho = \rho_c$

In this case one finds (see 108, 109) that

$$p(m) \propto f(m) V_\gamma(m/L^{1/(\gamma-1)}), \quad \text{for } 2 < \gamma < 3 \quad (27)$$

$$p(m) \propto f(m) e^{-m^2/2\Delta^2 L} \quad \gamma > 3. \quad (28)$$

where the scaling function  $V_\gamma(z)$  is given by (77). Thus at criticality  $p(m)$  decays as a power law  $m^{-\gamma}$  for large  $m$  which is cut off by a finite size scaling function and the cut-off mass scales as

$$m_{\text{cut-off}} \sim L^{1/(\gamma-1)} \quad \text{for } 2 < \gamma < 3 \quad (29)$$

$$\sim L^{1/2} \quad \text{for } \gamma > 3. \quad (30)$$

## 5. CONDENSATION IN THE CANONICAL ENSEMBLE: EXACTLY SOLVABLE CASES

Before proceeding to derive the results of Section 4.1 in the general case, it is useful to work out cases where both  $Z(M, L)$  and  $p(m)$  can be obtained in closed form. We consider two examples here. In the first example there is a genuine condensation transition, whereas in the second one has only pseudocondensation.

### 5.1. Example I

Making the choice

$$f(m) = \frac{2}{\sqrt{\pi}} \frac{1}{m^{5/2}} e^{-1/m}, \quad (31)$$

for all  $m$ , yields the large  $m$  behavior (7) with  $\gamma = 5/2$  and  $A = 2/\sqrt{\pi}$ . To calculate the Laplace transform  $g(s)$  of (31) we make use of the following identity, 3.471.9 from Gradshtyn and Ryzhik,<sup>(22)</sup>

$$\int_0^\infty x^{\nu-1} e^{-\beta/x-\gamma x} dx = 2 \left(\frac{\beta}{\gamma}\right)^{\nu/2} K_\nu(2\sqrt{\beta\gamma}), \quad (32)$$

where  $K_\nu(x)$  is the modified Bessel function. Choosing  $\beta = 1, \gamma = s, \nu = -3/2$  and using the fact that  $K_{-\nu}(x) = K_\nu(x)$  one gets

$$\int_0^\infty x^{-5/2} e^{-1/x-sx} dx = 2s^{3/4} K_{3/2}(2\sqrt{s}). \tag{33}$$

Next, we use the expression

$$K_{3/2}(z) = \sqrt{\frac{\pi}{2z}} \frac{(1+z)}{z} e^{-z}. \tag{34}$$

Substituting this on the r.h.s of Eq. (33) and simplifying we obtain

$$g(s) = \frac{2}{\sqrt{\pi}} \int_0^\infty m^{-5/2} e^{-1/m-sm} dm = (1 + 2\sqrt{s}) e^{-2\sqrt{s}}. \tag{35}$$

We then substitute this result on the r.h.s. of Eq. (19) and expand the r.h.s to obtain

$$\int_0^\infty Z(M, L) e^{-sM} dM = \sum_{k=0}^L \binom{L}{k} (4s)^{k/2} e^{-2L\sqrt{s}}. \tag{36}$$

To proceed we need to invert the Laplace transform in Eq. (36). For this, we require the inverse Laplace transform,  $\mathcal{L}_s^{-1}[s^{k/2} e^{-a\sqrt{s}}]$  with  $a = 2L$ . This is done by again using the identity in Eq. (32). Using  $\nu = -1/2, \beta = a^2/4, \gamma = s$  and

$$K_{1/2}(z) = \sqrt{\pi/2z} e^{-z} \tag{37}$$

we get

$$\int_0^\infty x^{-3/2} e^{-a^2/4x} e^{-sx} dx = \frac{2\sqrt{\pi}}{a} e^{-a\sqrt{s}}. \tag{38}$$

This provides us with the identity,

$$\mathcal{L}_s^{-1}[e^{-a\sqrt{s}}] = \frac{a e^{-a^2/4x}}{2\sqrt{\pi x^{3/2}}} = -\frac{1}{\sqrt{\pi x}} \frac{\partial}{\partial a} [e^{-a^2/4x}], \tag{39}$$

where  $x$  is the argument of the inverse Laplace transform. Next we differentiate both sides of Eq. (39)  $k$  times with respect to  $a$ . This gives,

$$\begin{aligned} \mathcal{L}_s^{-1}[s^{k/2} e^{-a\sqrt{s}}] &= \frac{(-1)^{k-1}}{\sqrt{\pi x}} \left(\frac{\partial}{\partial a}\right)^{k-1} [e^{-a^2/4x}] \\ &= \frac{(4x)^{-(k+1)/2}}{\sqrt{\pi x}} e^{-a^2/4x} H_{k+1} \left(\frac{a}{\sqrt{4x}}\right), \end{aligned} \tag{40}$$

where  $H_k(x)$  is the Hermite polynomial of degree  $k$  and argument  $x$  and we have used the Rodrigues' representation

$$H_k(x) = (-1)^k e^{x^2} \frac{d^k}{dx^k} e^{-x^2}. \tag{41}$$

Using the result (40), we then invert the Laplace transform in Eq. (36) to obtain

$$Z(M, L) = \frac{1}{2\sqrt{\pi}} \frac{e^{-L^2/M}}{M} \sum_{k=0}^L \binom{L}{k} M^{-k/2} H_{k+1} \left( \frac{L}{\sqrt{M}} \right). \tag{42}$$

We still need to perform the sum in Eq. (42). To do this, we use the following identity which is proved in the Appendix A,

$$\sum_{k=0}^L \binom{L}{k} b^{-k} H_k(x) = b^{-L} H_L(x + b/2), \tag{43}$$

where  $b$  is any constant. Now, consider the sum

$$\begin{aligned} \sum_{k=0}^L \binom{L}{k} \frac{H_{k+1}(x)}{b^k} &= \sum_{k=0}^L \binom{L}{k} b^{-k} \left[ 2x H_k(x) - \frac{dH_k(x)}{dx} \right] \\ &= 2x b^{-L} H_L(x + b/2) - \frac{d}{dx} [b^{-L} H_L(x + b/2)] \\ &= 2x b^{-L} H_L(x + b/2) - 2L b^{-L} H_{L-1}(x + b/2). \end{aligned} \tag{44}$$

In going from 1st to the 2nd line of Eq. (44), we have used the well known identity,  $H_{k+1}(x) = 2x H_k(x) - dH_k/dx$ , in going from 2nd to the 3rd line we have used the identity in Eq. (43) and in going from 3rd to the 4th line we have used another well known identity  $dH_k(x)/dx = 2k H_{k-1}(x)$ . Substituting this result on the r.h.s. of Eq. (42) and simplifying we obtain our final formula, valid for all  $M$  and  $L$ ,

$$Z(M, L) = \frac{L}{\sqrt{\pi}} M^{-(L+3)/2} e^{-L^2/M} \left[ H_L \left( \frac{2L + M}{2\sqrt{M}} \right) - \sqrt{M} H_{L-1} \left( \frac{2L + M}{2\sqrt{M}} \right) \right]. \tag{45}$$

As a check for consistency, one can easily verify that for  $L = 1$ , using  $H_0(x) = 1$  and  $H_1(x) = 2x$ , the formula in Eq. (45) reduces to

$$Z(M, 1) = \frac{2}{\sqrt{\pi}} \frac{1}{M^{5/2}} e^{-1/M} = f(M), \tag{46}$$

as it should be for  $L = 1$  from the definition in Eq. (2).

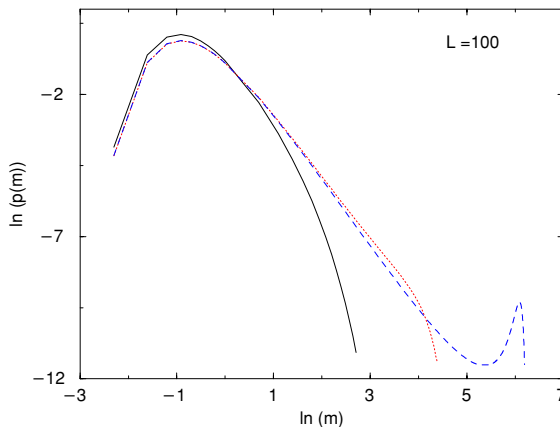
Since  $f(m) \sim m^{-5/2}$  for large  $m$ , we expect from the GCE analysis in Section-3 that in this case there will be a condensation transition at the critical density,  $\rho_c = \rho(\mu = 0)$ , where  $\rho(\mu)$  is given by Eq. (6). Now,  $\rho(\mu = 0)$  can be obtained

from the Laplace transform:  $\rho(\mu = 0) = -g'(0)$ , where  $g'(s) = dg/ds$ . Using Eq. (35) we get

$$\rho_c = 2. \quad (47)$$

To see how the condensation transition manifests itself in the single site mass distribution function  $p(m)$ , we calculate  $p(m)$  explicitly by substituting in Eq. (17) the expression for  $f(m)$  from Eq. (31) and that of  $Z(M, L)$  from Eq. (45). Using Mathematica, we plot this explicit expression of  $p(m)$  for  $L = 100$  for three densities,  $\rho = 1$  (subcritical),  $\rho = \rho_c = 2$  (critical) and  $\rho = 6$  (supercritical) in Fig. 2. The transition from the fluid phase ( $\rho < \rho_c = 2$ ) to the condensed phase ( $\rho > \rho_c = 2$ ) is clearly seen: the condensate appears as an additional bump in  $p(m)$  near its tail for the supercritical case  $\rho = 6$ .

The exact solution detailed above is instructive. It confirms the grand canonical prediction that the signature of the condensation transition is manifest in the behaviour of the single site mass distribution  $p(m)$  near its tail, as evident in Fig. 2. The asymptotic decay of  $p(m)$  for large  $m$  is different for  $\rho < \rho_c$ ,  $\rho = \rho_c$  and  $\rho > \rho_c$ . For  $\rho < \rho_c$ ,  $p(m)$  decays exponentially for large  $m$ . For the critical case  $\rho = \rho_c$ ,  $p(m)$  has a power law tail:  $p(m) \sim m^{-5/2}$  for large  $m$ . As  $\rho$  increases beyond  $\rho_c$ , the critical power law part of  $p(m)$  does not change, but the extra mass  $(\rho - \rho_c)L$  accumulates on the condensate which shows up as an additional bump beyond the power law tail of  $p(m)$ . Thus for  $\rho > \rho_c$ ,  $p(m)$  has two parts: a power law decaying part followed by a bump, indicating that the condensate coexists with a background that behaves as a critical fluid. Even though this exact solution was obtained only for a specific  $f(m)$  (31), it confirms the generic picture



**Fig. 2.** The distribution  $p(m)$  vs.  $m$  for the exactly solvable case, plotted using *Mathematica* for  $L = 100$  and  $\rho = 1$  (subcritical),  $\rho = \rho_c = 2$  (critical) and  $\rho = 6$  (supercritical). The condensate shows up as an additional bump near the tail of  $p(m)$  in the supercritical case.

of Section 4.1 for the behaviour in the tail of  $p(m)$  at subcritical, critical and the supercritical densities respectively. Our goal in the next section is to analyse the large  $m$  behaviour of  $p(m)$  for these three cases for a general  $f(m)$  allowing a condensation transition, as in Eq. (7).

**5.2. Example II**

It is also instructive to solve exactly a case where  $f(m)$  decays more slowly than  $1/m^2$  and condensation does not occur. This leads us to our second exactly solvable example where we find that even though there is no genuine condensation, a pseudocondensate appears nevertheless.

We consider

$$f(m) = \frac{1}{\sqrt{\pi}} \frac{1}{m^{3/2}} e^{-1/m}, \tag{48}$$

for which, using (37), one finds

$$g(s) = e^{-2s^{1/2}}. \tag{49}$$

Inverting (19), using (39), yields

$$Z(M, L) = \frac{1}{\pi^{1/2}} \frac{L}{M^{3/2}} e^{-L^2/M} \tag{50}$$

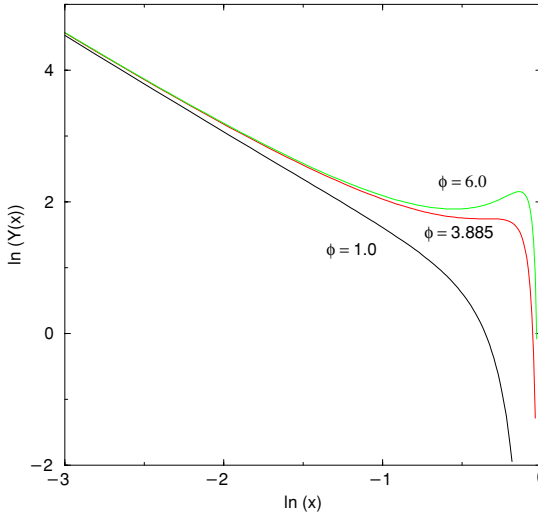
and from (17) we find

$$p(m) = \frac{1}{\pi^{1/2}} \frac{L-1}{L} \left( \frac{M}{m(M-m)} \right)^{3/2} \exp(-(L-1)^2/(M-m) + L^2/M - 1/m). \tag{51}$$

A natural scaling regime emerges when  $M = \phi L^2, m = xM$ . Note that in this regime the density is superextensive. Taking the limit of  $L$  large we obtain  $p(xM) = \pi^{-1/2} M^{-3/2} Y(x)$  where

$$Y(x) = \frac{1}{[x(1-x)]^{3/2}} \exp[-x/(\phi(1-x))]. \tag{52}$$

A bump in the tail of this distribution emerges when there are two turning points of  $Y(x)$  at positive  $x$ . This occurs when  $\phi > \phi_c$  where  $\phi_c = 2 + 4\sqrt{2}/3 = 3.88562 \dots$  (see Fig. 3). As we shall discuss later in Section 7.2 this bump is not a true condensate but rather corresponds to what we shall refer to as a ‘pseudocondensate’.



**Fig. 3.** The scaling function  $Y(x)$  vs.  $x$  in Eq. (52), for  $\phi = 1$ ,  $\phi = \phi_c = 3.88562$  and  $\phi = 6$ . The pseudocondensate shows up as a bump near the tail of  $Y(x)$  for  $\phi > \phi_c$ .

**6. CONDENSATION IN THE CANONICAL ENSEMBLE: GENERAL CASE**

We now proceed to analyze the case of a general  $f(m)$  characterized by a power law tail with exponent  $\gamma > 2$  as in Eq. (7). As already noted the Laplace transform

$$g(s) \equiv \int_0^\infty f(m) e^{-s m} dm \tag{53}$$

plays a crucial role in our analysis. We start by formally inverting the Laplace transform in Eq. (19) using the Bromwich formula,

$$Z(M, L) = \int_{s_0-i\infty}^{s_0+i\infty} \frac{ds}{2\pi i} \exp[L(\ln g(s) + \rho s)] \tag{54}$$

where we have used  $M = \rho L$ . Similarly, one has

$$Z(M - m, L) = \int_{s_0-i\infty}^{s_0+i\infty} \frac{ds}{2\pi i} \exp[L(\ln g(s) + \rho s) - s m]. \tag{55}$$

In Eqs. (54) and (55), the contour in the complex  $s$  plane parallels the imaginary axis with its real part,  $s_0$ , to the right of all singularities of the integrand. Since  $f(m < 0) \equiv 0$ , the integrand is analytic in the right half plane. Therefore,  $s_0$  can assume any non-negative value. Meanwhile, for  $f$  given by (7),  $s = 0$  is a branch point singularity. As we shall see, in the subcritical case  $\rho < \rho_c$  there exists a



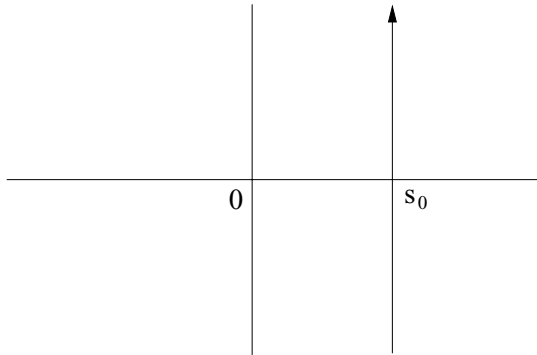


Fig. 4. The contour parallel to the imaginary axis passing through the saddle point  $s_0$  in the complex  $s$  plane.

saddle point at positive  $s$  and  $s_0$  can be chosen to be this saddle point (see Fig. (4)). One can then evaluate the Bromwich integral in Eq. (54) by the saddle point method for large  $L$ . As the density  $\rho$  approaches its critical value  $\rho_c$  from below, the saddle point  $s_0$  moves towards 0. Thus, in the critical case ( $\rho = \rho_c$ ) and in the supercritical case ( $\rho > \rho_c$ ), one can no longer evaluate the Bromwich integral by the saddle point method and an alternative approach must be used.

Let us first evaluate the integral in Eq. (54) in the limit  $L \rightarrow \infty$  by the saddle point method, assuming a saddle point exists. It is convenient to define

$$h(s) \equiv \rho s + \ln g(s). \tag{56}$$

Then the saddle point equation,  $h'(s_0) = 0$ , is

$$\rho = -g'(s_0)/g(s_0), \tag{57}$$

which is precisely equivalent to GCE approach in Eq. (6) on identifying  $s_0 = \mu$ . Thus the saddle point evaluation works provided there exists a solution  $s_0 > 0$  of Eq. (57). As clarified in the GCE analysis, a solution exists when  $\rho < \rho_c$  where

$$\rho_c = -g'(0)/g(0) = -g'(0). \tag{58}$$

We have assumed that  $f(m)$  is normalized to unity so that  $g(0) = 1$ . Also, when the saddle point  $s_0 > 0$  exists, one simply has

$$Z(M, L) \simeq \frac{\exp(Lh(s_0))}{\sqrt{2\pi Lh''(s_0)}}. \tag{59}$$

Similarly when  $m \ll O(L)$ , from Eq. (55) one gets  $Z(M - m, L) \simeq Z(M, L) e^{-s_0 m}$ . Substituting in Eq. (17) we get, for  $\rho < \rho_c$  and  $1 \ll m \ll O(L)$ ,

$$p(m) \simeq f(m)e^{-s_0 m}, \tag{60}$$

thus recovering the GCE result upon identifying  $s_0 = \mu$ . This shows that for  $\rho < \rho_c$ , the canonical and the grand canonical approach are equivalent and the mass distribution  $p(m)$  decays exponentially for large  $m$  with a characteristic mass  $m^* = 1/s_0$ .

As  $\rho$  approaches the critical value  $\rho_c$  from below,  $s_0$  approaches 0 and hence the characteristic mass  $m^*$  diverges. To see how the asymptotic behaviour of  $p(m)$  changes as one increases  $\rho$  through its critical value, we will now focus only in the vicinity of the critical point. Near the critical point, i.e, when  $|\rho - \rho_c|$  is small, the most important contribution to the integral in Eq. (54) comes from the small  $s$  region. Hence, to obtain the leading behaviour for large  $L$  it is sufficient to consider only the small  $s$  behavior of  $g(s)$  in Eq. (54). For  $f(m)$  in Eq. (7) with a noninteger  $\gamma > 2$ , one can expand, quite generally, the Laplace transform  $g(s)$  in Eq. (53) for small  $s$ , as

$$g(s) = \sum_{k=0}^{n-1} (-1)^k \frac{\mu_k}{k!} s^k + bs^{\gamma-1} + \dots \tag{61}$$

Here  $n = \text{int}[\gamma]$ ,  $\mu_k$  is the  $k$ th moment of  $f(m)$  (which exists for  $k < n$ ). We assume that  $f(m)$  is normalized to unity, i.e.,  $\mu_0 = 1$ . Note also that from Eq. (58) it follows that

$$\mu_1 = \rho_c. \tag{62}$$

The term  $bs^{\gamma-1}$  in Eq. (61) is the leading singular term. For  $f(m)$  in Eq. (7) with a noninteger  $\gamma$ , one can show (see appendix-B) that

$$b = A \Gamma(1 - \gamma), \tag{63}$$

a relation that we will use later. Note that the expansion in Eq. (61) is valid only for noninteger  $\gamma$ . For integer  $\gamma$ , one can carry out a similar analysis and it is easy to show that the leading singular term has a logarithmic correction:

$$g(s) = \sum_{k=0}^{\gamma-2} (-1)^k \frac{\mu_k}{k!} s^k + cs^{\gamma-1} \ln s + \dots \quad \text{for } \gamma = 2, 3, \dots \tag{64}$$

where

$$c = \frac{(-1)^\gamma A}{(\gamma - 1)!}. \tag{65}$$

Substituting the small  $s$  expansion of  $g(s)$  from Eq. (61) in Eq. (56) and keeping only the two leading order terms explicitly one gets

$$\begin{aligned} h(s) &= (\rho - \rho_c)s + bs^{\gamma-1} + \dots \quad \text{for } 2 < \gamma < 3 \\ &= (\rho - \rho_c)s - As^2 \log(s)/2 + \dots \quad \text{for } \gamma = 3 \\ &= (\rho - \rho_c)s + \Delta^2 s^2/2 + \dots + bs^{\gamma-1} + \dots \quad \text{for } \gamma > 3 \end{aligned} \tag{66}$$

where  $\Delta$  is defined in Eq. (12). The special role of  $\gamma = 3$  is now clear. The next-to-leading term in  $h(s)$  is  $s^{\gamma-1}$  for  $2 < \gamma < 3$  and  $s^2$  for  $\gamma > 3$ .

Below we substitute the small  $s$  expansion of  $h(s)$  from Eq. (66) in the integral in Eq. (54) and analyse its leading asymptotic behaviour for large  $L$  for the three cases  $\rho < \rho_c$ ,  $\rho > \rho_c$  and  $\rho = \rho_c$  separately. Since we are using the small  $s$  expansion, this analysis is valid only in the vicinity of the critical point, i.e., when  $|\rho - \rho_c|$  is small.

**6.1. Subcritical Case:  $\rho < \rho_c$**

For  $\rho < \rho_c$ , it follows from Eq. (66) that  $h(s)$  has a saddle at  $s_0 > 0$ . This is equivalent to saying that Eq. (57) has a solution which, to leading order in  $(\rho_c - \rho)$ , is given by

$$\begin{aligned}
 s_0 &\simeq \left[ \frac{(\rho_c - \rho)}{b(\gamma - 1)} \right]^{1/(\gamma-2)} && \text{for } 2 < \gamma < 3 \\
 &\simeq -(\rho_c - \rho)/A \log(\rho_c - \rho) && \text{for } \gamma = 3 \\
 &\simeq (\rho_c - \rho)/\Delta^2 && \text{for } \gamma > 3.
 \end{aligned}
 \tag{67}$$

Consequently, it follows from Eq. (17), as well as from Eq. (60), that the single site mass distribution  $p(m)$  behaves for  $1 \ll m \ll O(L)$  as

$$p(m) \sim \frac{A}{m^\gamma} e^{-s_0 m},
 \tag{68}$$

where  $s_0$  is given by Eq. (67) for small  $(\rho_c - \rho)$ . Thus the characteristic mass  $m^* = 1/s_0$  diverges as a power law as  $\rho$  approaches  $\rho_c$  from below,

$$\begin{aligned}
 m^* &\sim (\rho_c - \rho)^{-1/(\gamma-2)} && \text{for } 2 < \gamma < 3 \\
 &\sim -\log(\rho_c - \rho)/(\rho_c - \rho) && \text{for } \gamma = 3 \\
 &\sim (\rho_c - \rho)^{-1} && \text{for } \gamma > 3.
 \end{aligned}
 \tag{69}$$

The partition function in Eq. (59), which we will require later, may also be calculated and behaves asymptotically as

$$\begin{aligned}
 Z(M = \rho L, L) &\sim \exp \left[ -L B (\rho_c - \rho)^{(\gamma-1)/(\gamma-2)} \right] && \text{for } 2 < \gamma < 3 \\
 &\sim \exp \left[ L(\rho_c - \rho)^2 / 2A \log(\rho_c - \rho) \right] && \text{for } \gamma = 3 \\
 &\sim \exp \left[ -L(\rho_c - \rho)^2 / 2\Delta^2 \right] && \text{for } \gamma > 3,
 \end{aligned}
 \tag{70}$$

where  $B = (\gamma - 2)b^{-1/(\gamma-2)}(\gamma - 1)^{-(\gamma-1)/(\gamma-2)}$ .

## 6.2. Supercritical Case: $\rho > \rho_c$

For the *supercritical* regime ( $\rho > \rho_c$ ), there is no solution to (57) on the positive real axis and more care is needed to find the asymptotic form of  $Z(M, L)$ . One can see this clearly in the vicinity of the critical point where one can use the small  $s$  expansion of  $h(s)$  in Eq. (66): evidently for  $\rho > \rho_c$ ,  $h(s)$  does not have a minimum at any positive  $s_0$ . In the  $L \rightarrow \infty$  limit and with  $(\rho - \rho_c)$  small, one can, however, develop a scaling analysis by identifying the different scaling regimes and calculating the corresponding scaling forms for  $Z(M, L)$  and hence that of  $p(m)$ . The main result of this subsection is to obtain an exact asymptotic formula describing the shape of the condensate bump.

Substituting Eq. (61) in Eqs. (54) and (55), we get

$$Z(M, L) \simeq W_L(\rho_c - \rho) \quad (71)$$

$$Z(M - m, L) \simeq W_L((m - M_{\text{ex}})/L), \quad (72)$$

where  $M_{\text{ex}} \equiv (\rho - \rho_c)L$  is the excess mass and

$$W_L(y) = \int_{-i\infty}^{i\infty} \frac{ds}{2\pi i} \exp[L(-ys + C(s))]. \quad (73)$$

In Eq. (73) the function  $C(s)$  represents the nonanalytic correction to the linear term in  $h(s)$  in Eq. (66), i.e.,

$$\begin{aligned} C(s) &= bs^{\gamma-1} \quad \text{for } 2 < \gamma < 3 \\ &= -As^2 \log(s)/2 \quad \text{for } \gamma = 3 \\ &= \Delta^2 s^2/2 + \dots + bs^{\gamma-1} \quad \text{for } \gamma > 3 \end{aligned} \quad (74)$$

By including the first nonanalytic term in  $C(s)$  we will obtain the leading large  $L$  asymptotic behaviour.

Knowing the function  $W_L(y)$  and using Eqs. (71) and (72), one can rewrite the mass distribution in Eq. (17) as

$$p(m) \simeq f(m) \frac{W_L((m - M_{\text{ex}})/L)}{W_L(\rho_c - \rho)}, \quad (75)$$

All crucial information about the condensate ‘bump’ around  $m = M_{\text{ex}} = (\rho - \rho_c)L$  is thus encoded in the asymptotic behavior of  $W_L(y)$  defined in Eq. (73). Below we analyze the asymptotics of  $W_L(y)$  and hence that of  $p(m)$  in the two cases  $2 < \gamma < 3$  and  $\gamma > 3$  separately.

6.2.1. Case- $2 < \gamma < 3$

In this case, we substitute  $C(s) = bs^{\gamma-1}$  in Eq. (73) and rescale  $s \rightarrow L^{-1/(\gamma-1)}s$  to rewrite Eq. (73) in the scaling form

$$W_L(y) = L^{-1/(\gamma-1)}V_\gamma [L^{(\gamma-2)/(\gamma-1)}y], \tag{76}$$

where the scaling function is

$$V_\gamma(z) = \int_{-i\infty}^{i\infty} \frac{ds}{2\pi i} e^{-zs+bs^{\gamma-1}}. \tag{77}$$

We were not able to perform the complex integral in Eq. (77) in closed form. However, its asymptotic behaviors can be worked out, the details of which are relegated to appendix-C. We find,

$$V_\gamma(z) \simeq A |z|^{-\gamma} \quad \text{as } z \rightarrow -\infty \tag{78}$$

$$= c_0 \quad \text{at } z = 0 \tag{79}$$

$$\simeq c_1 z^{(3-\gamma)/2(\gamma-2)} e^{-c_2 z^{(\gamma-1)/(\gamma-2)}} \quad \text{as } z \rightarrow \infty \tag{80}$$

where  $A$  is the amplitude in Eq. (7),  $b = A \Gamma(1 - \gamma)$  (as in Eq. (63)) and the constants  $c_0, c_1$  and  $c_2$  are given as

$$c_0 = b^{-1/(\gamma-1)} / [(\gamma - 1)\Gamma((\gamma - 2)/(\gamma - 1))] \tag{81}$$

$$c_1 = [2\pi(\gamma - 2)(b(\gamma - 1))^{1/(\gamma-2)}]^{-1/2} \tag{82}$$

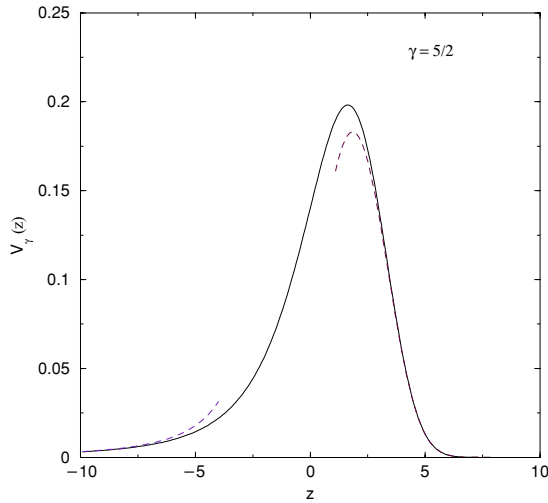
$$c_2 = (\gamma - 2)/(\gamma - 1)(b(\gamma - 1))^{1/(\gamma-2)}. \tag{83}$$

Evidently the scaling function  $V_\gamma(z)$  is highly asymmetric, has an algebraic decay  $|z|^{-\gamma}$  as  $z \rightarrow -\infty$  and decays extremely fast (faster than a gaussian) as  $z \rightarrow \infty$ . To plot the full function  $V_\gamma(z)$  in Eq. (77), it is useful to first transform the integration in the complex  $s$  plane in Eq. (77) to a real integral. This can be achieved by making a change of variable  $s = e^{\pm i\pi/2}y$  respectively for the upper and the lower half of the imaginary axis in the integral in Eq. (77) and then simplifying. One obtains

$$V_\gamma(z) = \frac{1}{\pi} \int_0^\infty dy e^{-c_3 y^{\gamma-1}} \cos [b \cos(\pi \gamma/2)y^{\gamma-1} + yz], \tag{84}$$

where  $c_3 = -b \sin(\pi \gamma/2) > 0$  for  $2 < \gamma < 3$ . The real integral in Eq. (84) can be easily evaluated numerically. A plot of this function for  $\gamma = 5/2$ , where the integral in Eq. (84) was performed numerically using Mathematica, is shown in Fig. 5. The dashed lines at the two tails show the agreement with the asymptotic analytical forms in Eqs. (78) and (80).

Armed with knowledge of the asymptotic behaviors of  $W_L(y)$  we are now ready to calculate the mass distribution  $p(m)$  from Eq. (75). Let us first evaluate



**Fig. 5.** Plot of the scaling function  $V_\gamma(z)$  for  $\gamma = 5/2$  obtained by numerically integrating the integral in Eq. (84). The *dashed lines* show the asymptotic tails obtained analytically in Eqs. (78) and (80).

the denominator in Eq. (75) using the scaling form of  $W_L(y)$  in Eq. (76),

$$Z(M, L) \simeq W_L(\rho_c - \rho) = L^{-1/(\gamma-1)} V_\gamma \left[ -L^{(\gamma-2)/(\gamma-1)} (\rho - \rho_c) \right]. \quad (85)$$

Since  $\rho > \rho_c$ , the argument of the scaling function in Eq. (85) is a large negative number as  $L \rightarrow \infty$ , provided  $\rho - \rho_c = M_{\text{ex}}/L > 0$  is kept fixed. One can then use the asymptotic tail of  $V_\gamma(z)$  as given in Eq. (78) and we get, in the regime where  $M_{\text{ex}} \sim O(L)$ ,

$$Z(M, L) \simeq W_L(\rho_c - \rho) \simeq \frac{A}{L^{\gamma-1} (\rho - \rho_c)^\gamma} = \frac{A L}{M_{\text{ex}}^\gamma}. \quad (86)$$

Collecting all these results together in Eq. (75) one then finds

$$p(m) \simeq \frac{f(m)}{A} (\rho - \rho_c)^\gamma L^{\gamma(\gamma-2)/(\gamma-1)} V_\gamma \left[ \frac{m - M_{\text{ex}}}{L^{1/\gamma-1}} \right]. \quad (87)$$

Note that the result in Eq. (87) is valid for all  $m$ , provided the total mass  $M$  and the system size  $L$  are both large with  $M/L = \rho$  fixed. Now one can identify various limits of (87). Using (78) one finds

$$p(m) \simeq f(m) \quad \text{for} \quad 1 \ll m \ll O(L) \quad (88)$$

$$p(m) \simeq f(m) \frac{1}{(1-x)^\gamma} \quad \text{for} \quad m = x M_{\text{ex}} \quad \text{where} \quad 0 < x < 1. \quad (89)$$

Thus for  $m \ll O(L)$ ,  $p(m)$  is a pure power law but when  $m$  becomes extensive  $p(m)$  begins to deviate from  $f(m)$ .

Focusing now only near the condensate where  $m \sim M_{\text{ex}}$ , one obtains using  $f(m) \sim Am^{-\gamma}$  the asymptotic form of  $p(m) \simeq p_{\text{cond}}(m)$  near the condensate bump,

$$p_{\text{cond}}(m) = L^{-\gamma/(\gamma-1)} V_\gamma \left[ \frac{m - M_{\text{ex}}}{L^{1/\gamma-1}} \right], \tag{90}$$

where  $V_\gamma(z)$  is given exactly by Eq. (77) with asymptotic forms in Eqs. (78–80) and a full shape as shown in Fig. 5. Thus the shape of the condensate bump, as shown in Fig. 5 is highly asymmetric and non-gaussian for  $2 < \gamma < 3$  and we refer to this as the ‘anomalous’ condensate. Also note that, setting  $\xi = (m - M_{\text{ex}})L^{-1/\gamma-1}$ ,

$$\int_{-\infty}^{\infty} dm p_{\text{cond}}(m) = L^{-1} \int_{-\infty}^{\infty} d\xi V_\gamma(\xi) \tag{91}$$

Thus the area under  $p_{\text{cond}}(m)$  is  $O(1/L)$  which corresponds to precisely one condensate in the system of size  $L$ .

### 6.2.2. Case-II $\gamma > 3$

In this case, using the appropriate form for  $C(s)$  from Eq. (74) in Eq. (73) we get

$$W_L(y) = \int_{-i\infty}^{i\infty} \frac{ds}{2\pi i} \exp [L(-ys + \Delta^2 s^2/2 + \dots + bs^{\gamma-1})]. \tag{92}$$

We will see that  $W_L(y)$  has different behaviors for  $y > 0$  and  $y < 0$ . Let us first consider the case  $y > 0$ , where one can again perform a saddle point analysis as in the previous subsection and one gets, to leading order in  $L$  and for  $y\sqrt{L} \sim O(1)$

$$W_L(y) \simeq \frac{1}{\sqrt{2\pi \Delta^2 L}} e^{-y^2 L/2\Delta^2}. \tag{93}$$

Thus the function  $W_L(y)$  has a gaussian decay for positive but small  $y$ . A careful analysis shows that the gaussian form with the scaling variable  $y\sqrt{L}$  in Eq. (93) remains valid not just over the range  $y\sqrt{L} \sim O(1)$ , but over a wider range: at least up to  $y \sim O(L^{-1/3})$ . For large  $y > 0$ , one can still do a saddle point analysis as in Eq. (59) and  $W_L(y)$  will have a non-gaussian tail for large, positive  $y$ .

We next turn to  $y = -|y| < 0$ . In this case, there is no saddle point and we have to do the integration along the imaginary axis passing through the origin. Again, let us first consider the regime where  $|y|\sqrt{L} \sim O(1)$ . In this case, we

rescale  $s \rightarrow s/\sqrt{L}$  in Eq. (92) which then becomes

$$W_L(y) = \frac{1}{\sqrt{L}} \int_{-i\infty}^{i\infty} \frac{ds}{2\pi i} \exp \left[ -(y\sqrt{L})s + \Delta^2 s^2/2 + \dots + bL^{(3-\gamma)/2} s^{\gamma-1} \right]. \quad (94)$$

Keeping  $|y|\sqrt{L} = z$  fixed and taking the  $L \rightarrow \infty$  limit, one can drop all the subleading terms and the resulting integral is a gaussian one which can be simply performed to give for  $|y| \sim O(1/\sqrt{L})$ ,

$$W_L(y) \simeq \frac{1}{\sqrt{2\pi} \Delta^2 L} e^{-y^2 L/2\Delta^2}, \quad (95)$$

the same result as for  $y \sim O(L^{-1/2}) > 0$  in Eq. (93). Thus, within the range  $|y| \sim O(L^{-1/3})$ , the function  $W_L(y)$  is symmetric and gaussian. On the other hand, far to the left of the origin where  $|y| \gg O(L^{-1/3})$ , this analysis breaks down. Let us illustrate the case  $|y| \sim O(1)$ . In that regime of  $|y|$ , we again start from Eq. (92) but this time rescale  $s \rightarrow s/L$  which gives

$$W_L(y) = \frac{1}{L} \int_{-i\infty}^{i\infty} \frac{ds}{2\pi i} \exp \left[ |y|s + \Delta^2 s^2/2L + \dots + bL^{2-\gamma} s^{\gamma-1} \right] \quad (96)$$

$$\simeq \frac{1}{L} \int_{-i\infty}^{i\infty} \frac{ds}{2\pi i} \exp[|y|s] \left[ 1 + \frac{\Delta^2 s^2}{2L} + \dots + b \frac{s^{\gamma-1}}{L^{\gamma-2}} \right], \quad (97)$$

where in going from first to the second line, we have expanded the exponential for large  $L$ , keeping  $|y|$  fixed. Now, the integral in Eq. (97) can be done term by term. The first term gives a delta function  $\delta(|y|)$  which is 0 since  $|y| > 0$ . Similarly the second term, which is the second derivative of the delta function with respect to  $|y|$ , is also zero. In fact, all the analytic terms containing integer powers of  $s$  will be similarly equal to 0, except the last singular term which has  $s^{\gamma-1}$ . Thus one gets for  $|y| \sim O(1)$  with  $L \rightarrow \infty$ ,

$$W_L(y) \simeq \frac{b}{L^{\gamma-1}} \int_{-i\infty}^{i\infty} \frac{ds}{2\pi i} \exp[|y|s] s^{\gamma-1} = \frac{b}{|y|^\gamma L^{\gamma-1}} \int_{-i\infty}^{i\infty} \frac{ds}{2\pi i} e^s s^{\gamma-1}. \quad (98)$$

The latter integral is done in appendix-C (see Eq. (A.14)). Using this result in Eq. (98) one obtains

$$W_L(y) \simeq \frac{A}{|y|^\gamma L^{\gamma-1}} \quad \text{for } |y| \sim O(1) \quad (99)$$

Although here we consider  $|y| \sim O(1)$  it is easy to show the result also holds for  $|y| \sim O(L^{-\alpha})$  where  $\alpha < 1/2$ .



Thus, the large  $L$  behavior of the function  $W_L(y)$  for  $\gamma > 3$  can be summarized as follows,

$$W_L(y) \simeq \frac{1}{\sqrt{2\pi \Delta^2 L}} e^{-y^2 L/2\Delta^2} \quad \text{for } |y| \ll O(L^{-1/3}) \quad (100)$$

$$\simeq \frac{A}{|y|^\gamma L^{\gamma-1}} \quad \text{for } -y = |y| \sim O(1) \quad (101)$$

The function  $W_L(y)$  is thus a gaussian near its peak at  $y = 0$  and then has non-gaussian tails far away from the peak. On the negative side, this tail is algebraic and decays as  $|y|^{-\gamma}$ .

We now compute the asymptotic behavior of the mass distribution  $p(m)$  in Eq. (75) for  $\gamma > 3$ . First, we calculate the partition function in Eq. (71). Substituting the results in Eqs. (100) and (101) in Eq. (71) we find

$$\begin{aligned} Z(M, L) &\simeq W_L(-(\rho - \rho_c)) \\ &\simeq \frac{e^{-M_{\text{ex}}^2/2\Delta^2 L}}{\sqrt{2\pi \Delta^2 L}} \quad \text{for } |M_{\text{ex}}| \sim O(L^{2/3}) \end{aligned} \quad (102)$$

$$\simeq \frac{A L}{M_{\text{ex}}^\gamma} \quad \text{for } M_{\text{ex}} \sim O(L). \quad (103)$$

Comparing Eqs. (103) and (86) one sees that for  $M_{\text{ex}} > 0$  (i.e.,  $M > \rho_c L$ ) and in the regime where it is  $O(L)$ , the partition function  $Z(M, L)$  has the same asymptotic form for all  $\gamma > 2$ . Using the results in Eqs. (100) and (101) one can similarly evaluate the numerator in Eq. (75). Collecting these results, we find that

$$p(m) \simeq f(m) \frac{M_{\text{ex}}^\gamma}{A L} W_L\left(\frac{m - M_{\text{ex}}}{L}\right). \quad (104)$$

The asymptotic form of  $p(m) = p_{\text{cond}}(m)$  near the condensate bump has a gaussian peak centered at  $m = M_{\text{ex}} = (\rho - \rho_c)L$  with its width scaling as  $O(\sqrt{L})$ , but has a non-gaussian tail far away from the peak. More precisely, one gets the following behavior near the peak:

$$p_{\text{cond}}(m) \simeq \frac{1}{\sqrt{2\pi \Delta^2 L^3}} e^{-(m - M_{\text{ex}})^2/2\Delta^2 L} \quad \text{for } (m - M_{\text{ex}}) \sim O(L^{2/3}). \quad (105)$$

On the other hand, for  $m$  far less than the peak value of  $M_{\text{ex}}$ , we have

$$p_{\text{cond}}(m) \simeq f(m) (1 - m/M_{\text{ex}})^{-\gamma} \quad \text{for } M_{\text{ex}} - m \sim O(L). \quad (106)$$

The integral of  $p_{\text{cond}}$  gives  $1/L + O(L^{1-\gamma})$  where the dominant contribution is from the gaussian peak. Again this implies a single condensate in the system.

### 6.3. Critical Case: $\rho = \rho_c$

In the critical case  $\rho = \rho_c$ , it follows from Eq. (75)

$$p(m) \simeq f(m) \frac{W_L(m/L)}{W_L(0)}. \quad (107)$$

We now consider the two cases  $2 < \gamma < 3$  and  $\gamma > 3$  separately.

#### 6.3.1. Case-I $2 < \gamma < 3$

In this case, using Eq. (76) we get

$$p(m) \simeq f(m) \frac{V_\gamma(m/L^{1/(\gamma-1)})}{V_\gamma(0)} = \frac{f(m)}{c_0} V_\gamma(m/L^{1/(\gamma-1)}), \quad (108)$$

where the constant  $c_0$  is given in Eq. (81) and the asymptotic behavior of the function  $V_\gamma(z)$  can be read off Eqs. (79) and (80). The Eq. (108) thus describes the finite size scaling function associated with the distribution  $p(m)$ : it decays as a power law  $p(m) \simeq f(m) \sim Am^{-\gamma}$  for large  $m$  and then is cut off by the finite size of the sample and the cut-off mass scales as  $m_{\text{cut-off}} \sim L^{1/(\gamma-1)}$ .

#### 6.3.2. Case-II $\gamma > 3$

In this case, using Eq. (93) in Eq. (107) we get

$$p(m) \simeq f(m) e^{-m^2/2\Delta^2 L} \quad \text{for } m \sim O(L^{2/3}). \quad (109)$$

Thus, in this case, the cut-off function is Gaussian up to  $m \sim O(L^{2/3})$ , even though the cut off mass scales as  $m_{\text{cut-off}} \sim L^{1/2}$  for all  $\gamma > 3$ .

## 7. OTHER CASES

So far we have only considered  $f(m)$  with asymptotic form (7). In this section we extend our results to two other choices of  $f(m)$ .

### 7.1. Stretched Exponential Case

First we briefly discuss the case

$$f(m) \simeq A \exp(-cm^\alpha) \quad \text{where } \alpha < 1. \quad (110)$$

This stretched exponential decay clearly fulfils the criterion for condensation of Section 2. Noting that all moments  $\mu_k$  of  $f$  exist, one finds that the subcritical partition function in the vicinity of the critical point behaves asymptotically as

$$Z(M = \rho L, L) \sim \exp[-L(\rho_c - \rho)^2/2\Delta^2] \quad (111)$$

and the subcritical  $p(m)$  behaves as

$$p(m) \sim A \exp(-cm^\alpha - s_0 m), \tag{112}$$

where  $s_0 = (\rho_c - \rho)/\Delta^2$ . Thus in the subcritical regime, there are two ‘mass’ scales. The first one is a natural scale of  $O(1)$  that characterises the stretched exponential decay of  $f(m)$  itself and it remains of  $O(1)$  even at the critical point. The second mass scale  $1/s_0 \sim (\rho_c - \rho)^{-1}$ , that emerges out of collective behavior, however diverges as the critical point is approached from below. Thus, unlike the power law  $f(m)$  discussed in the previous section where at the critical point  $p(m)$  becomes scale free, for the stretched exponential case only one out of the two scales diverges at the critical point. In this sense, the condensation transition associated with the stretched exponential case is somewhat different from the usual scenario of a second order phase transition.

In the condensed phase  $\rho > \rho_c$ , one can make an analysis qualitatively similar to the power-law case with  $\gamma > 3$ , though the details are somewhat different. Omitting details, we find that for  $\rho > \rho_c$  the condensate bump is gaussian near its peak as expected

$$p_{\text{cond}}(m) \simeq \frac{1}{\sqrt{2\pi \Delta^2 L^3}} e^{-(m-M_{\text{ex}})^2/2\Delta^2 L} \quad \text{for } (m - M_{\text{ex}}) \sim O(\sqrt{L}). \tag{113}$$

On the other hand, far to the left of the peak where  $M_{\text{ex}} - m \sim O(L)$  we have

$$p_{\text{cond}}(m) \simeq f(m) \exp(c [M_{\text{ex}}^\alpha - |m - M_{\text{ex}}|^\alpha]). \tag{114}$$

### 7.2. Case $1 < \gamma < 2$

As noted in Section 3, in the case where

$$f(m) \simeq Am^{-\gamma} \quad 1 < \gamma < 2 \tag{115}$$

we do not expect true condensation. However, as we shall now analyse, an interesting phenomenon may occur at suitably chosen superextensive densities where a ‘pseudocondensate’ bump emerges.

For (115) the corresponding small  $s$  expansion of  $g(s)$  reads

$$g(s) = \mu_0 + bs^{\gamma-1} + \dots \tag{116}$$

where  $b = A\Gamma(1 - \gamma)$  and we take as usual  $\mu_0 = 1$ . Now since  $b < 0$  for  $1 < \gamma < 2$  we *always* find a solution  $s_0 > 0$  to the saddle point equation (57) which when small is

$$s_0 \simeq \left[ \frac{-b(\gamma - 1)L}{M} \right]^{1/(2-\gamma)} \tag{117}$$

and the saddle point expression for  $Z(M, L)$  reads

$$Z(M, L) \simeq (2\pi(\gamma - 2)(\gamma - 1)bLs_0^{\gamma-3})^{-1/2} \exp \left\{ -\frac{2-\gamma}{\gamma-1} \left( \frac{-b(\gamma-1)L}{M^{\gamma-1}} \right)^{1/(2-\gamma)} \right\}. \quad (118)$$

Let us consider the regime where

$$M = \phi L^{1/(\gamma-1)} \quad m = xM \quad (119)$$

where  $\phi$  and  $x$  are fixed as  $L \rightarrow \infty$ . Using (17) we find

$$p(x) \simeq \frac{A}{M^\gamma} x^{-\gamma} (1-x)^{-(3-\gamma)/2(2-\gamma)} \exp \left[ -C \left( (1-x)^{-(\gamma-1)/(2-\gamma)} - 1 \right) \right] \quad (120)$$

where

$$C = (2-\gamma)(-b)^{1/(2-\gamma)} \left( \frac{\gamma-1}{\phi} \right)^{(\gamma-1)/(2-\gamma)} \quad (121)$$

As  $\phi$  is increased a bump in the tail of  $p(x)$  emerges corresponding to two real turning points of  $p(x)$ . However we argue that this does not correspond to a true condensate for the following reasons. First, as  $M$  increases,  $Z(M, L)$  will follow the same expression (118) thus there can be no true phase transition since  $Z(M, L)$  is analytic. Secondly, there is no diverging length scale in  $p(m)$ . Thirdly, the bump in  $p(x)$  is broad i.e. extends over a finite range of  $x$ , unlike a true condensate bump which would be narrow. Therefore we call this bump a ‘pseudocondensate’ as it is really an extension of the fluid phase, rather than a condensate coexisting with the fluid.

To understand why (119) is the natural scale for  $M$ , let us consider the sum of  $L$  random variables each drawn from a distribution (115). We expect the largest of the  $L$  random variables drawn from  $f(m)$  to be  $\mathcal{O}(L^{1/(\gamma-1)})$  and the total mass to also be  $\mathcal{O}(L^{1/(\gamma-1)})$ . Therefore when  $M$  is on the scale (119) the constraint of fixed total mass leads to non-trivial  $p(m)$ .

## 8. DISCUSSION

In this work we have presented an analysis of the partition function (2) of a factorised steady state within the canonical ensemble. The analysis has revealed the structure of the condensate as summarised in Section 4.1. The two types of condensate occurring when  $f(m) \sim m^{-\gamma}$  with  $2 < \gamma < 3$  or  $\gamma > 3$  correspond to condensates with anomalous (non-gaussian) and gaussian fluctuations respectively and each has a distinct scaling function for the shape of the condensate. In both cases the nonequilibrium phase transition to the condensed phase is continuous in the sense that the characteristic mass of the exponential site mass distribution of the fluid phase diverges as the transition is approached from below. We have also analysed the case of stretched exponential  $f(m)$  where condensation occurs

but the transition is somewhat different: even though there is a diverging scale one gets a stretched exponential rather than power law distribution  $p(m)$  at the critical point and in the fluid component of the condensed phase. Finally we have shown that in the case where  $f(m) \sim m^{-\gamma}$  where  $1 < \gamma < 2$  a pseudocondensate appears at superextensive critical density, but there is no phase transition.

Our results may easily be generalised to the case of discrete mass, exemplified by the ZRP where the occupation of each site is  $0, 1, 2 \dots$  and the total mass  $M$  is a positive integer. In this case the relevant expression for the canonical partition function is

$$Z(M, L) = \oint \frac{dz}{2\pi i} z^{-(M+1)} [F(z)]^L, \tag{122}$$

where the integral is around a closed contour about the origin in the complex  $z$  plane and

$$F(z) = \sum_{m=0}^{\infty} z^m f(m). \tag{123}$$

The phase transition occurs when the saddle point of the  $z$  integral reaches the radius of convergence of (123). For  $f(m)$  of the form (7) the radius of convergence is  $z = 1$ , therefore we let  $z = (1 - u)$  and expand  $F(z)$  for  $u$  small as

$$F(1 - u) = \sum_{k=0}^{r-1} \frac{(-u)^k F^{(k)}}{k!} + bu^{b-1} + \dots \tag{124}$$

where  $r$  is the integer part of  $\gamma$  and  $F^{(k)} = \frac{d^k}{dz^k} F(z)|_{z=1}$ . The second term in (124) is the leading singular part and the coefficient  $b$  is again  $b = A\Gamma(1 - \gamma)$ . The general analysis and results then follow analogously to that of Section 6.

The structure of the condensate also has implications for the dynamics within the steady state. In the steady state a site must be randomly selected to hold the condensate thus the translational symmetry is broken. However on any finite lattice there will be a timescale  $\tau_L$  over which the condensate dissolves and reforms on another spontaneously selected site. In systems with symmetry breaking, the ‘flip time’  $\tau_L^{(12)}$  is of interest. A recent study<sup>(21)</sup> has shown that for the ZRP with asymmetric mass transfer and dynamics which yield  $f(m) \sim m^{-\gamma}$  the flip time grows as  $\tau_L \sim L^\gamma$ . This result was found numerically and also from a simple effective description for the condensate dynamics. That effective description requires a structure for  $p(m)$ , in particular a dip to the left of the condensate bump, which was also computed in Ref. (21) and is recovered by the results presented here.

Finally we mention that it would be interesting to analyse condensation in steady states that are not factorised, such as in the chipping model of Ref. (35). Generally, such steady states exhibit stronger correlations than a factorised one. In such cases a factorised steady state is often used as a ‘mean-field’ approximation

in the sense that some of the correlations in the true steady state are ignored. Condensation is known to occur in some cases of non-factorised steady states,<sup>(35)</sup> on the other hand there are some examples where the mean field approximation predicts a condensation transition but in the true steady state there is none.<sup>(38)</sup> It is of importance to further investigate these issues.

## ACKNOWLEDGMENTS

MRE thanks LPTMS for hospitality during a visit when some part of this paper was written and acknowledges partial support of EPSRC Programme grant GR/S10377/01. RKPZ acknowledges the support of the US National Science Foundation through DMR-0414122.

### A.1. PROOF OF AN ADDITION THEOREM FOR HERMITE POLYNOMIALS (43)

In this appendix, we prove the following identity,

$$\sum_{k=0}^L \binom{L}{k} b^{-k} H_k(x) = b^{-L} H_L(x + b/2), \quad (\text{A.1})$$

The generating function of the Hermite polynomials is well known,

$$\sum_{k=0}^{\infty} \frac{t^k}{k!} H_k(x) = e^{-t^2 + 2tx}. \quad (\text{A.2})$$

One also has trivially

$$\sum_{m=0}^{\infty} \frac{t^m b^m}{m!} = e^{bt}. \quad (\text{A.3})$$

Multiplying Eqs. (A.2) and (A.3) one gets

$$\sum_{k,m=0}^{\infty} \frac{t^{m+k} b^m}{m!k!} H_k(x) = e^{-t^2 + 2t(x+b/2)} = \sum_{n=0}^{\infty} \frac{t^n}{n!} H_n(x + b/2). \quad (\text{A.4})$$

Matching powers of  $t^L$  on both sides of Eq. (A.4) one arrives at the result in Eq. (A.1).

### A.2. PROOF OF EXPANSION (61, 63)

In this appendix we show that for  $f(m)$  in Eq. (7) with a noninteger  $\gamma > 2$ , the coefficient  $b$  in the singular term in the small  $s$  expansion of the Laplace

transform  $g(s)$  in Eq. (61) is related simply to the amplitude  $A$  of the power law tail of  $f(m)$  via

$$b = A \Gamma(1 - \gamma). \tag{A.5}$$

Note that  $n$  in Eq. (61) is simply  $n = \text{int}[\gamma]$ . Differentiating Eq. (61)  $n$  times with respect to  $s$  and using the definition of  $g(s)$  in Eq. (53), we get

$$(-1)^n \int_0^\infty e^{-sm} m^n f(m) dm = b \frac{\Gamma(\gamma)}{\Gamma(\gamma - n)} s^{\gamma-n-1} + \dots \tag{A.6}$$

Let us denote the l.h.s. of Eq. (A.6) by  $I(s)$ . Making a change of variable  $y = sm$  in the integral on the l.h.s of Eq. (A.6), yields

$$I(s) = (-1)^n s^{-n-1} \int_0^\infty e^{-y} y^n f(y/s) dy. \tag{A.7}$$

Next we take the  $s \rightarrow 0$  limit in Eq. (A.7). In that limit, the leading contribution to the integral will come from the region where the argument  $y/s$  of  $f(m)$  is large, so that one can use  $f(y/s) \approx A(s/y)^\gamma$ . Substituting this expression and performing the resulting integral, gives, to leading order in  $s$ ,

$$I(s) = (-1)^n A \Gamma(n + 1 - \gamma) s^{\gamma-n-1} + \dots \tag{A.8}$$

Comparing the leading terms on the l.h.s. and the r.h.s. of Eq. (A.6) we get

$$b = \frac{(-1)^n}{\Gamma(\gamma)} \Gamma(n + 1 - \gamma) \Gamma(\gamma - n) A. \tag{A.9}$$

Simplifying Eq. (A.9) using the well known identity,

$$\Gamma(x) \Gamma(1 - x) = \pi / \sin(\pi x), \tag{A.10}$$

gives the result in Eq. (A.5).

### A.3. ASYMPTOTIC EXPANSION OF $V_\gamma(Z)$

In this appendix we analyse the scaling function  $V_\gamma(z)$

$$V_\gamma(z) = \int_{-i\infty}^{i\infty} \frac{ds}{2\pi i} e^{-zs+bs^{\gamma-1}} \quad \text{where} \quad b = A\Gamma(1 - \gamma), \tag{A.11}$$

near its tails  $z \rightarrow \pm\infty$  for all  $2 < \gamma < 3$  and also evaluate the function at  $z = 0$ .

### A.3.1. The Tail $z \rightarrow -\infty$

We write  $z = -|z|$  in Eq. (77) and rescale  $s \rightarrow s/|z|$  to write

$$\begin{aligned} V_\gamma(z) &= \frac{1}{|z|} \int_{-i\infty}^{i\infty} \frac{ds}{2\pi i} e^{s+b(s/|z|)^{\gamma-1}} \\ &= \frac{1}{|z|} \int_{-i\infty}^{i\infty} \frac{ds}{2\pi i} e^s \left[ 1 + a \frac{s^{\gamma-1}}{|z|^{\gamma-1}} + \dots \right]. \end{aligned} \quad (\text{A.12})$$

In going from the first to the second line in Eq. (A.12) we have expanded  $\exp[b(s/|z|)^{\gamma-1}]$  in a power series. We now perform the integration in Eq. (A.12) term by term. The first term is simply zero for any nonzero  $|z|$ . The second term is of order  $O(|z|^{-\gamma})$ . In general, the  $(n+1)$ -th term will scale as  $O(|z|^{n(\gamma-1)+1})$ . Thus, for large  $|z|$ , the leading asymptotic behavior is captured by the second term and one gets

$$V_\gamma(z) \simeq \frac{b}{|z|^\gamma} \int_{-i\infty}^{i\infty} \frac{ds}{2\pi i} e^s s^{\gamma-1}. \quad (\text{A.13})$$

This integral may be performed by wrapping the contour around the branch cut on the negative real axis i.e. we integrate along  $s = e^{\pm i\pi} x$  with  $x$  real and positive. Then one finds

$$\int_{-i\infty}^{i\infty} \frac{ds}{2\pi i} e^s s^{\gamma-1} = \frac{\sin(\pi\gamma)}{\pi} \Gamma(\gamma) \quad (\text{A.14})$$

and so as  $z \rightarrow -\infty$ ,

$$V_\gamma(z) \simeq \frac{b \Gamma(\gamma) \sin(\pi\gamma)}{\pi |z|^\gamma} = \frac{A}{|z|^\gamma}. \quad (\text{A.15})$$

### A.3.2. The Tail $z \rightarrow +\infty$

In this case, the asymptotic behavior of the integral in Eq. (77) can be evaluated by the saddle point method. The function  $h_1(s) = -zs + bs^{\gamma-1}$  inside the exponential has a saddle point on the positive real axis at  $s^* = [z/b(\gamma-1)]^{1/(\gamma-2)}$ . Since the function is analytic in the plane between the imaginary axes passing through  $s = 0$  and  $s = s^*$ , the contour in Eq. (77) can be shifted to  $s = s^*$  and then the leading contribution to this integral for large  $z$  will come from the region around the saddle point at  $s = s^*$ . Expanding  $h_1(s) = h_1(s^*) + (s-s^*)^2 h_1''(s^*)/2 + \dots$  around the saddle and performing the resulting Gaussian integration, one gets the positive tail of the scaling function as in Eq. (80).



### A.3.3. The Value at $z = 0$

We now evaluate  $V_\gamma(0)$  and show that its value is given as in Eqs. (79) and (81). We need to perform the integral in Eq. (77) along the imaginary axis passing through  $s = 0$ . Rescaling  $s \rightarrow sb^{-1/(\gamma-1)}$  we get

$$V_\gamma(0) = b^{-1/(\gamma-1)} \int_{-i\infty}^{i\infty} \frac{ds}{2\pi i} e^{s^{\gamma-1}} \tag{A.16}$$

To evaluate this integral we bend the contour along the rays  $s = \exp^{\pm i\pi/(\gamma-1)} y$  (where  $y$  is real and positive) so that the argument of the exponential in (A.16) becomes real and negative. Then one finds

$$\begin{aligned} \int_{-i\infty}^{i\infty} \frac{ds}{2\pi i} e^{s^{\gamma-1}} &= \frac{\sin(\pi/(\gamma-1))}{\pi} \int_0^\infty dy e^{-y^{\gamma-1}} \\ &= \frac{1}{\gamma-1} \Gamma\left(\frac{\gamma-2}{\gamma-1}\right) \end{aligned} \tag{A.17}$$

where we have used  $\int_0^\infty dx e^{-x^\alpha} = \Gamma(1/\alpha)/\alpha$  and the identity (A.10). Finally we have

$$V_\gamma(0) = \frac{1}{b^{1/(\gamma-1)} (\gamma-1) \Gamma((\gamma-2)/(\gamma-1))}. \tag{A.18}$$

## REFERENCES

1. A. G. Angel, M. R. Evans, and D. Mukamel, *J. Stat. Mech.: Theory Exp.* P04001 (2004).
2. P. F. Arndt, T. Heinzl, and V. Rittenberg, *J. Phys. A: Math. Gen.* **31**:L45 (1998); *J. Stat. Phys.* **97**:1 (1999).
3. P. Bialas, Z. Burda, and D. Johnston, *Nucl. Phys. B* **493**:505 (1997).
4. Z. Burda, D. Johnston, J. Jurkiewicz, M. Kaminski, M. A. Novak, G. Papp, and I. Zahed, *Phys. Rev. E* **65**:026102 (2002).
5. Z. Burda, J. D. Correia, and A. Krzywicki, *Phys. Rev. E* **64**:046118 (2001).
6. D. Chowdhury, L. Santen, and A. Schadschneider, *Phys. Rep.* **329**:199 (2000).
7. S. N. Coppersmith, C.-h. Liu, S. Majumdar, O. Narayan, and T. A. Witten, *Phys. Rev. E* **53**:4673 (1996).
8. S. N. Dorogovtsev, J. F. F. Mendes, and A. N. Samukhin, *Nucl. Phys. B* **666**:396 (2003).
9. J. M. Drouffé, C. Godrèche, and F. Camia, *J. Phys. A: Math. Gen.* **31**:L19 (1998).
10. M. R. Evans, *Braz. J. Phys.* **30**:42 (2000).
11. M. R. Evans, *Europhys. Lett.* **36**:13 (1996).
12. M. R. Evans, D. P. Foster, C. Godreche, and D. Mukamel, *Phys. Rev. Lett.* **74**:208 (1995).
13. M. R. Evans and T. Hanney, *J. Phys. A: Math. Gen.* **38**:R195 (2005).
14. M. R. Evans and T. Hanney, *J. Phys. A: Math. Gen.* **36**:L441 (2003).
15. M. R. Evans, E. Levine, P. K. Mohanty, and D. Mukamel, *Eur. Phys. J. B* **41**:223 (2004).
16. M. R. Evans, S. N. Majumdar, and R. K. P. Zia, *J. Phys. A: Math. Gen.* **37**:L275 (2004).
17. M. R. Evans, S. N. Majumdar, and R. K. P. Zia (cond-mat/0602564).
18. I. T. Georgiev, B. Schmittmann, and R. K. P. Zia, *Phys. Rev. Lett.* **94**:115701 (2005).

19. C. Godrèche, *J. Phys. A: Math. Gen.* **36**:6313 (2003).
20. C. Godrèche and J. M. Luck, *J. Phys. Cond. Math.* **14**:1601(2002).
21. C. Godrèche and J. M. Luck, *J. Phys. A: Math. Gen.* **38**:7215–7237 (2005).
22. I. S. Gradshteyn and I. M. Ryzhik, *Table of Integrals, series and Products*, 6th edition, Academic Press, San Diego, 2000.
23. R. L. Greenblatt and J. L. Lebowitz cond-mat/0506776.
24. S. Großkinsky, G. M. Schütz, and H. Spohn, *J. Stat. Phys.* **113**:389 (2003).
25. K. Jain, *Phys. Rev. E* **72**:017105 (2005).
26. I. Jeon, P. March, and B. Pittel *Ann. Probab.* **28**:1162 (2000).
27. Y. Kafri, E. Levine, D. Mukamel, G. M. Schütz, and R. D. W. Willmann, *Phys. Rev. E* **68**:035101 (2003).
28. Y. Kafri, E. Levine, D. Mukamel, G. M. Schütz, and J. Török, *Phys. Rev. Lett.* **89**:035702 (2002).
29. Y. Kafri, E. Levine, D. Mukamel and J. Török, *J. Phys. A: Math. Gen.* **35**:L459 (2002).
30. G. Korniss, B. Schmittmann, and R. K. P. Zia, *Europhys. Lett.* **45**:431 (1999).
31. J. Krug and J. Garcia, *J. Stat. Phys.* **99**:31 (2000); R. Rajesh and S. N. Majumdar, *J. Stat. Phys.* **99**:943 (2000).
32. J. Krug and P. A. Ferrari, *J. Phys. A: Math. Gen.* **29**:L465 (1996).
33. E. Levine, D. Mukamel, and G. Ziv, *J. Stat. Mech.: Theory Exp.* P05001 (2004).
34. S. N. Majumdar, M. R. Evans, and R. K. P. Zia, *Phys. Rev. Lett.* **94**:180601 (2005).
35. S. N. Majumdar, S. Krishnamurthy, and M. Barma, *Phys. Rev. Lett.* **81**:3691 (1998); *J. Stat. Phys.* **99**:1 (2000).
36. J. T. Mettetal, B. Schmittmann, and R. K. P. Zia, *Europhys. Lett.* **58**:653 (2002).
37. O. J. O’Loan, M. R. Evans, and M. E. Cates, *Phys. Rev. E* **58**:1404 (1998).
38. R. Rajesh and S. Krishnamurthy, *Phys. Rev. E.* **66**:046132 (2002).
39. R. Rajesh and S. N. Majumdar, *Phys. Rev. E.* **63**:036114 (2001).
40. N. Rajewsky, T. Sasamoto, and E. R. Speer, *Physica A* **279**:123 (2000).
41. F. Ritort, *Phys. Rev. Lett.* **75**:1190 (1995).
42. F. Spitzer, *Adv. Math.* **5**:246 (1970).
43. J. Torok, *Physica A* **355**:374–382 (2005).
44. D. van der Meer, K. van der Weele, and D. Lohse, *J. Stat. Mech.: Theory Exp.* P04004 (2004).
45. R. K. P. Zia, M. R. Evans, and S. N. Majumdar, *J. Stat. Mech.: Theory Exp.* L10001 (2004).
46. F. Zielen and A. Schadschneider, *Phys. Rev. Lett.* **89**:090601 (2002).